



Fit to Drive

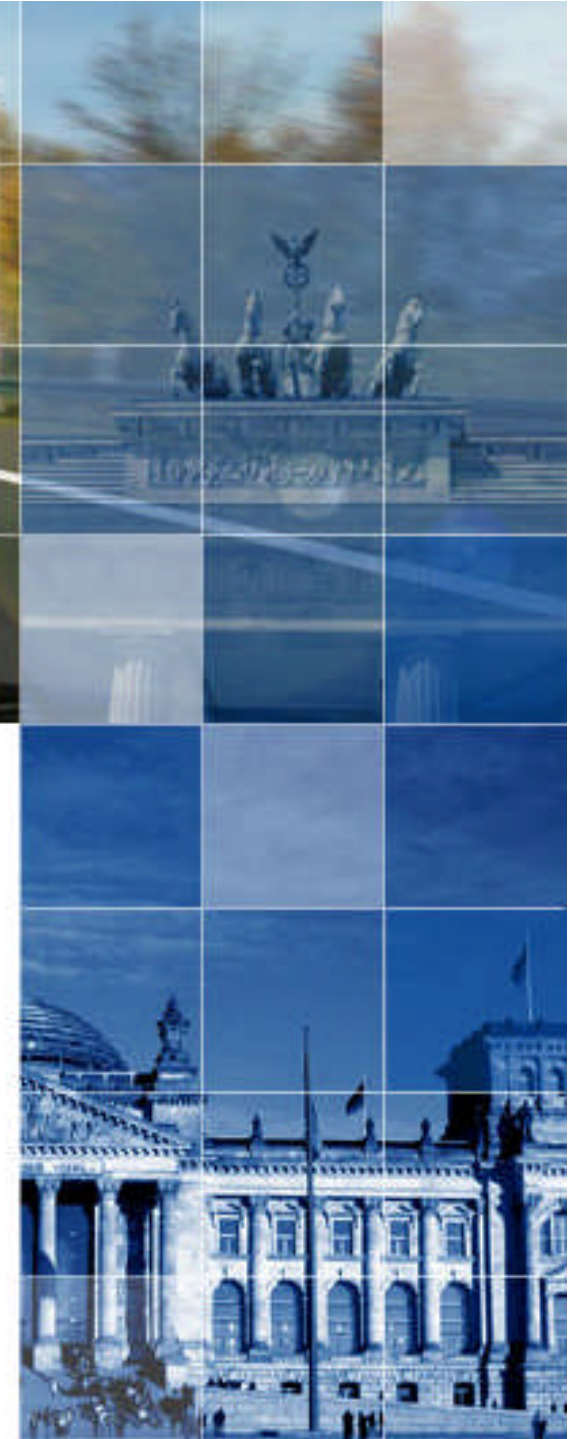
1st International Traffic Expert Congress
Berlin from May 3rd – 5th 2006

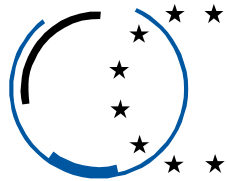


Welcome

„Decision-making in driving fitness diagnosis - psychological and medical criteria“

Dr. Hannelore Hoffmann-Born,
Jürgen Brenner-Hartmann,
TÜV SÜD Life Service GmbH





Fit to Drive

1st International Traffic Expert Congress
Berlin from May 3rd – 5th 2006



Life Service

DRIVING APTITUDE:

Who is fit to drive (safely)?

The answer in the German Expert Guidelines:



Fit to Drive

1st International Traffic Expert Congress
Berlin from May 3rd – 5th 2006



Life Service

An applicant cannot drive safely, if ...

“... according to the individual physical and mental (psychic) state in case of driving a motor-vehicle traffic endangerment has to be expected.”

This can be assumed, if

- a) the requirements on driving a motor-vehicle, including **a stable performance level** and the control of stress situations, can no longer be mastered,
- b) it has to be expected, that **a sudden breakdown** of the drivers abilities will occur in a foreseeable space of time,
- c) due to **hazardous attitudes, lack of insight or personality faults**, there is no warrantee that the driver will behave according to the traffic-rules and security demands.



Fit to Drive

1st International Traffic Expert Congress
Berlin from May 3rd – 5th 2006

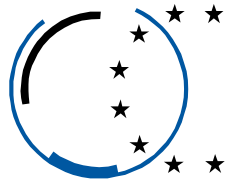


Life Service

REGRANTING THE DRIVING LICENCE:

What questions have to be answered by the expert?

The example of the drunk driver:

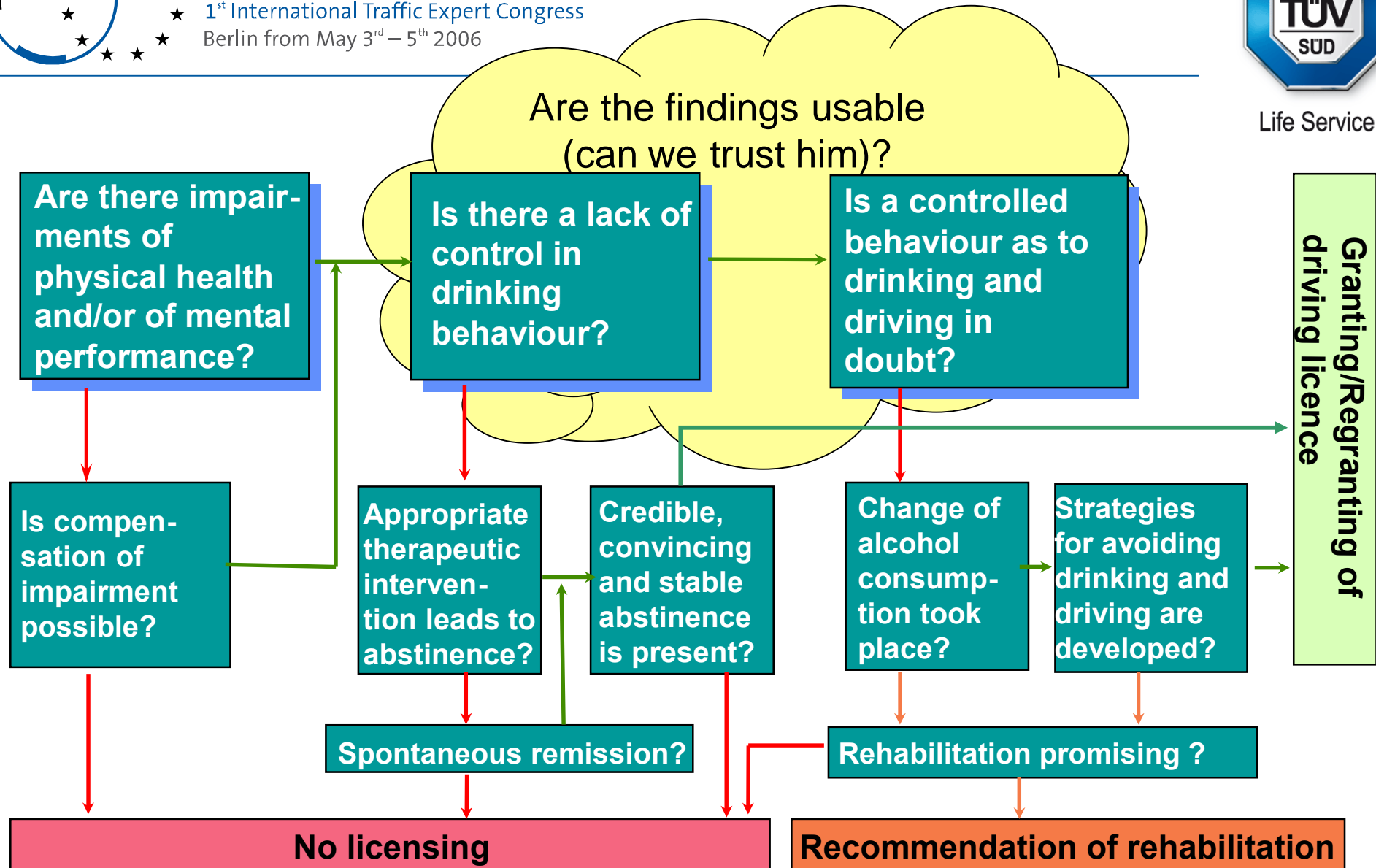


Fit to Drive

1st International Traffic Expert Congress
Berlin from May 3rd – 5th 2006



Life Service





Fit to Drive

1st International Traffic Expert Congress
Berlin from May 3rd – 5th 2006



Life Service

THE MEDICAL-PSYCHOLOGICAL ASSESSMENT:

What kind of contribution can be made by the medical and the psychological findings?

The interdisciplinary cooperation.

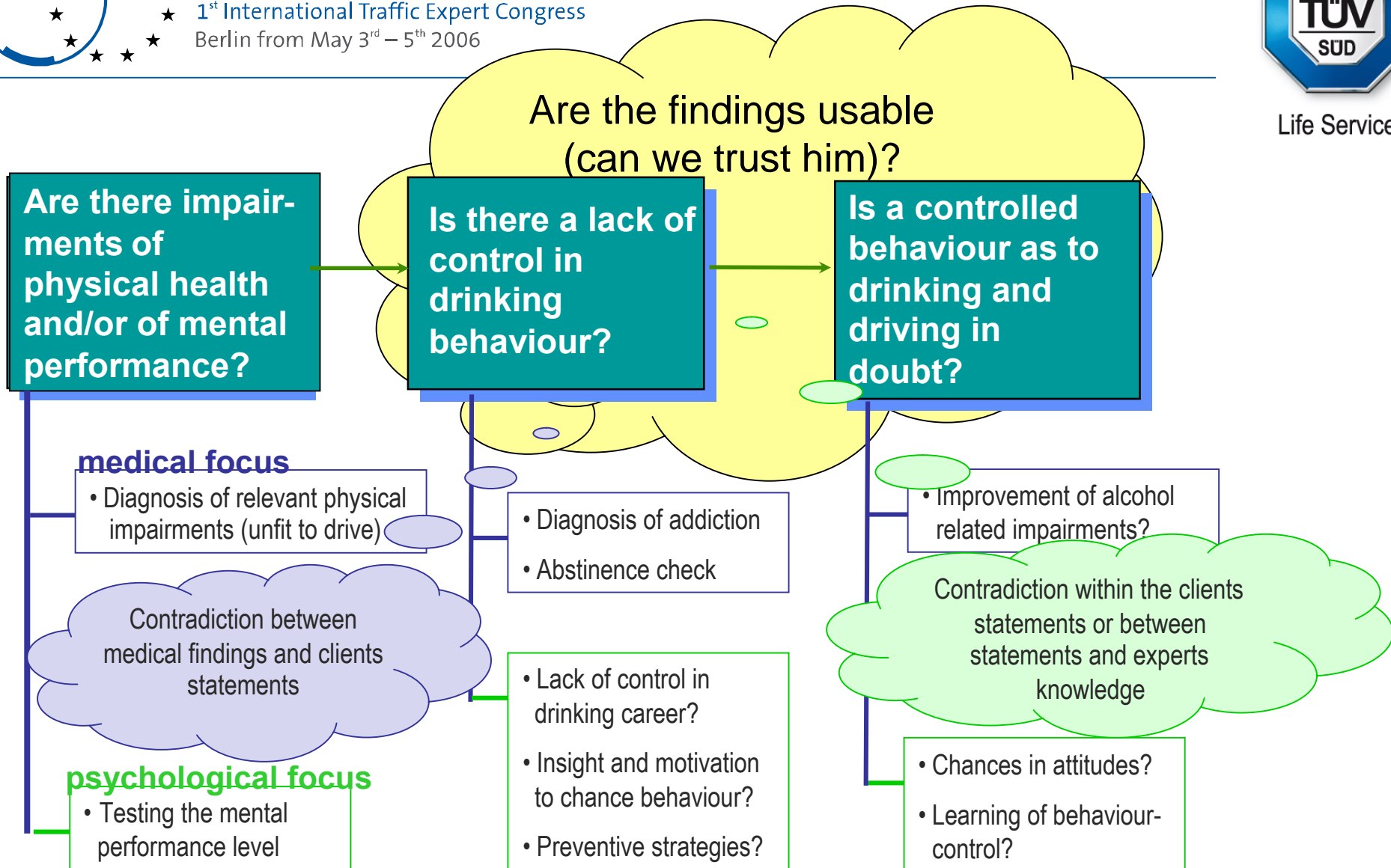


Fit to Drive

1st International Traffic Expert Congress
Berlin from May 3rd – 5th 2006



Life Service





Fit to Drive

1st International Traffic Expert Congress
Berlin from May 3rd – 5th 2006



Life Service

HELP FOR THE EXPERTS:

How to interpret the meaning and correlation of the findings?

The three dimensions of the German diagnostic system
(Evaluation Criteria of the DGVP and DGVM):



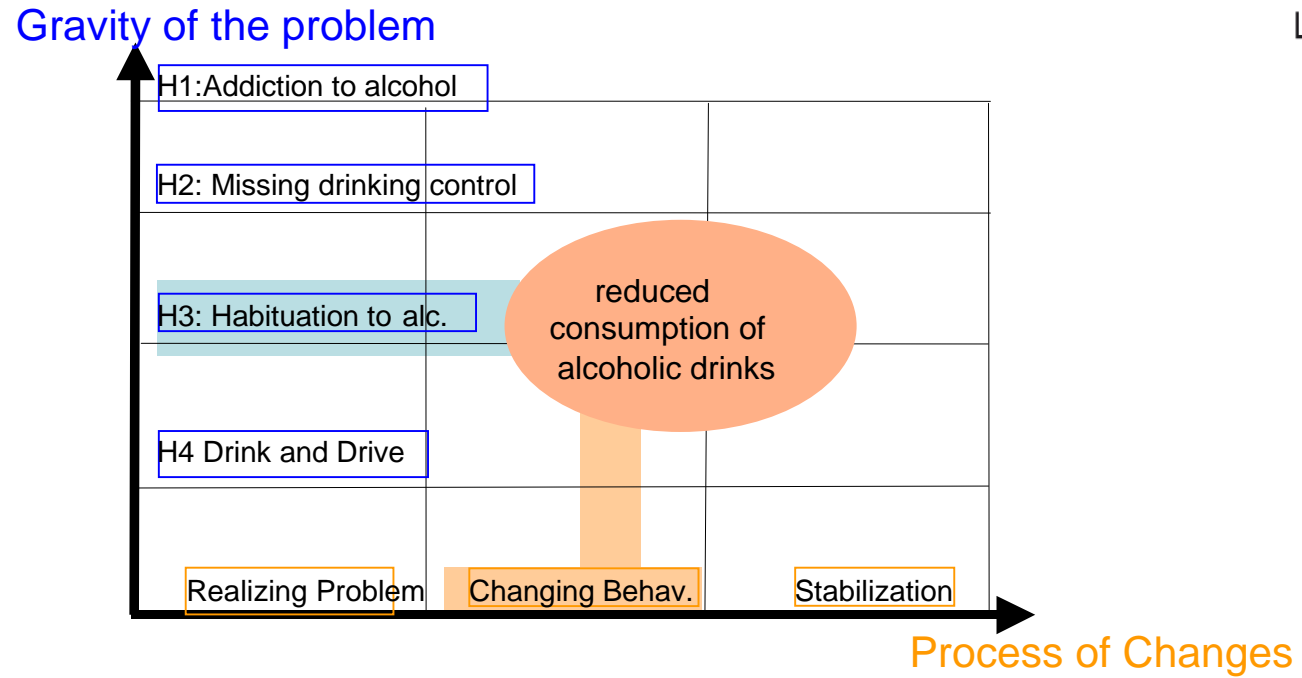


Fit to Drive

1st International Traffic Expert Congress
Berlin from May 3rd – 5th 2006



Life Service



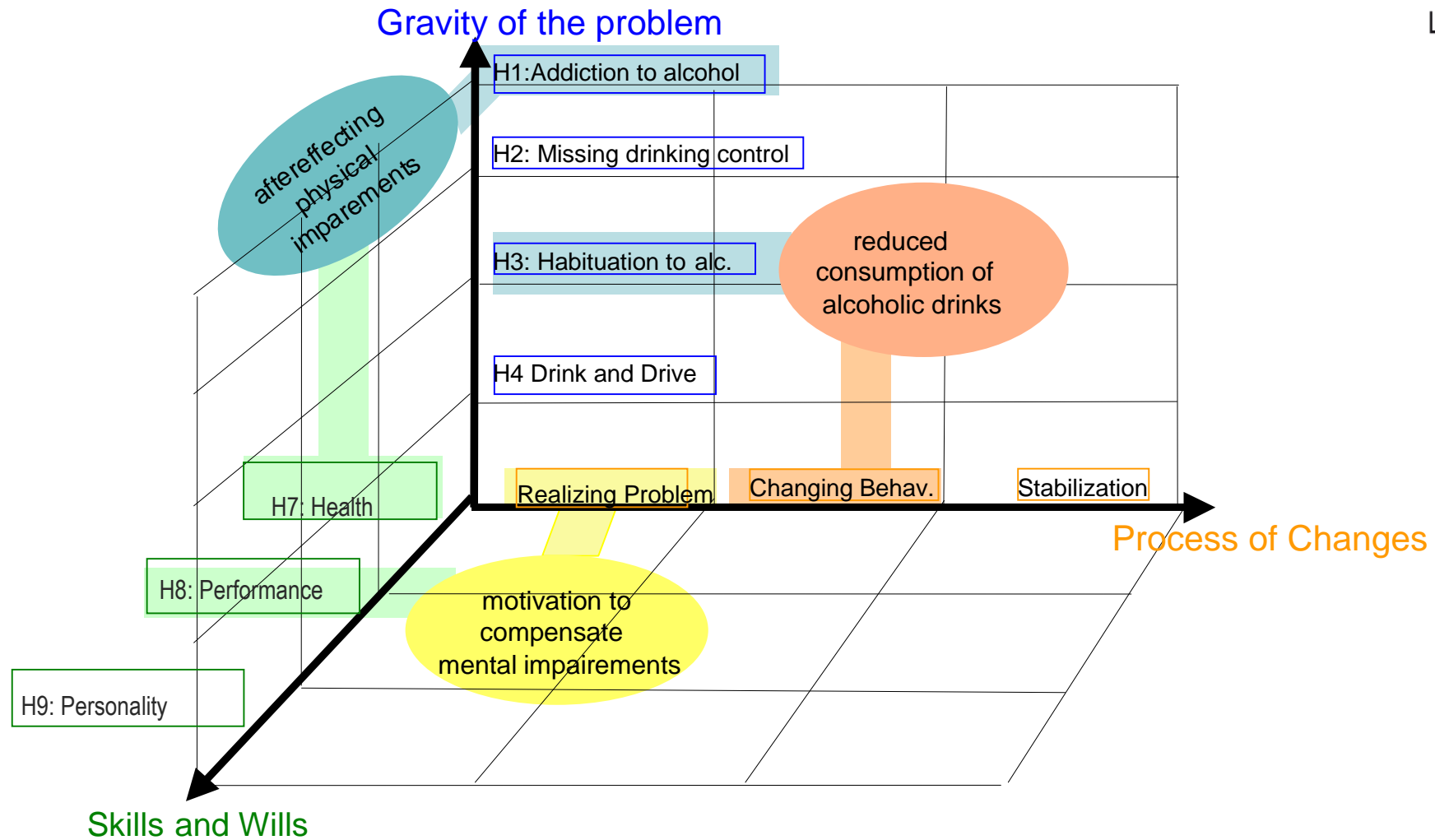


Fit to Drive

1st International Traffic Expert Congress
Berlin from May 3rd – 5th 2006



Life Service





Fit to Drive

1st International Traffic Expert Congress
Berlin from May 3rd – 5th 2006



Life Service

Much thanks for your interest!

